

FENDER FLARE INSTALLATION INSTRUCTION

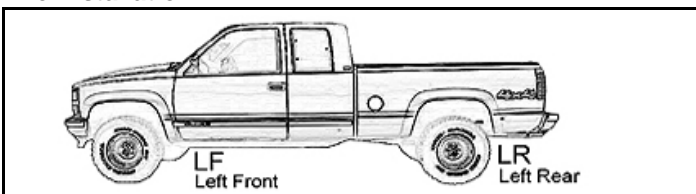
TOYOTA TUNDRA 07-13

Item No. 1ABFK00043/54 (Pocket Style)

Flares

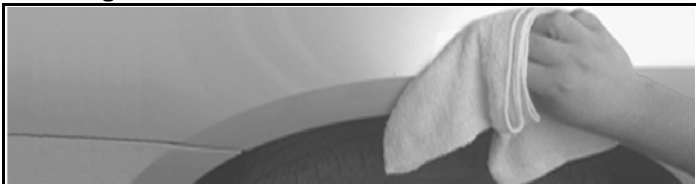
Qty (1) Fender Flare Left Front (LF)
Qty (1) Fender Flare Left Rear (LR)
Qty (1) Fender Flare Right Front (RF)
Qty (1) Fender Flare Right Rear (RR)
Qty (1) Rubber Seal(enough for four flares's outer edge)
Qty (34) Allen Bolt & Nut(Hex Key required)

Pre-Installation



Prefit and ensure both left(driver side) and right(passenger side) hand fender flare to the vehicle before painting or installation. You may remove any moldings, strips or existing flares from the vehicle for fitting or installation.

Cleaning



Wash and wipe dry the areas of contact on the vehicle body. Clean the surface and inside edge of the fender flare where the rubber seal is to be attached.

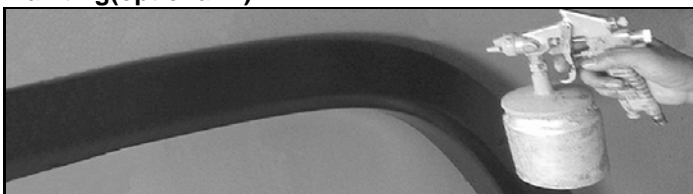
Parts for Front Flares

Qty (12) Flat Head Screw
Qty (6) Lever Clip
Qty (2) 6mm Plastic Fastener
Qty (4) 5mm Spacer
Qty (4) Self Tapping Screw
(see optional B)

Parts for Rear Flares

Qty (16) Flat Head Screw
Qty (6) Hex Washer Screw
Qty (2) 8mm Plastic Fastener
Qty (6) 10mm Spacer
Qty (4) Self Tapping Screw
(see optional B)

Painting(optional A)



Hire a professional painter or body shop and follow the paint manufacturer specifications to paint the flares. Clean all fender flares surfaces with clean water and a mild detergent before paint, do not use lacquer thinner or any solvent based products.

Apply Rubber Seal

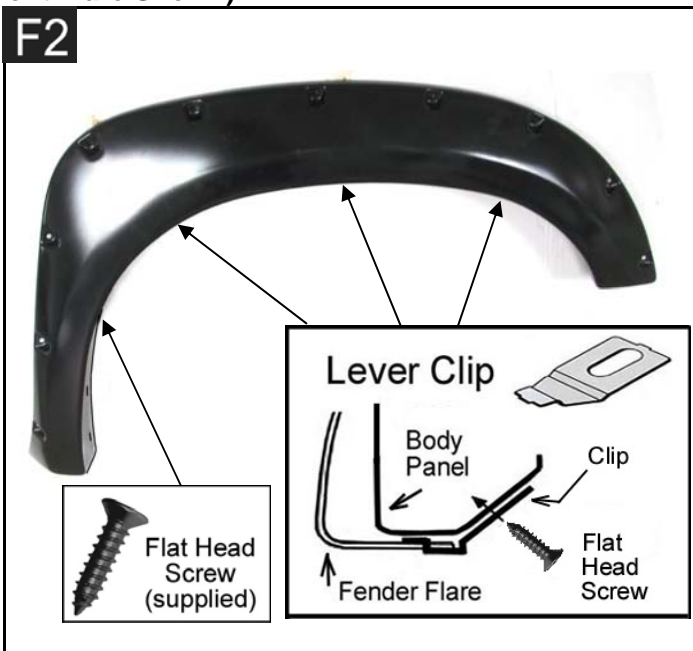


Remove about 1 inch tape liner from rubber seal and apply it on the flare, start one end and along the edge that comes in contact with body panel, apply pressure on the tape to ensure that it adheres well, trim excess rubber seal and so on.

Installation (Right Front Flare Shown)



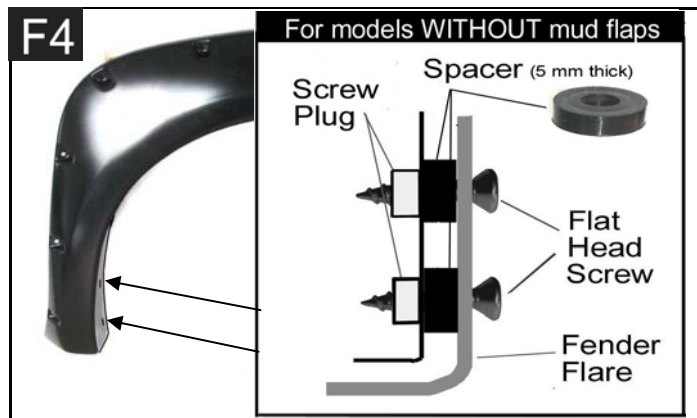
1. Use hex key to tight allen bolt & nut firmly on every pocket of the fender flare, shown as top.
2. Remove fastener or pin from rear of bumper. Once the flare line up, attach and fasten it, shown as bottom.



1. Apply 3 Lever Clip into the mounting slot in flare and secure it to the vehicle with flat head screw, shown as right.
2. Fasten1 flat head screw into the location, shown as left.

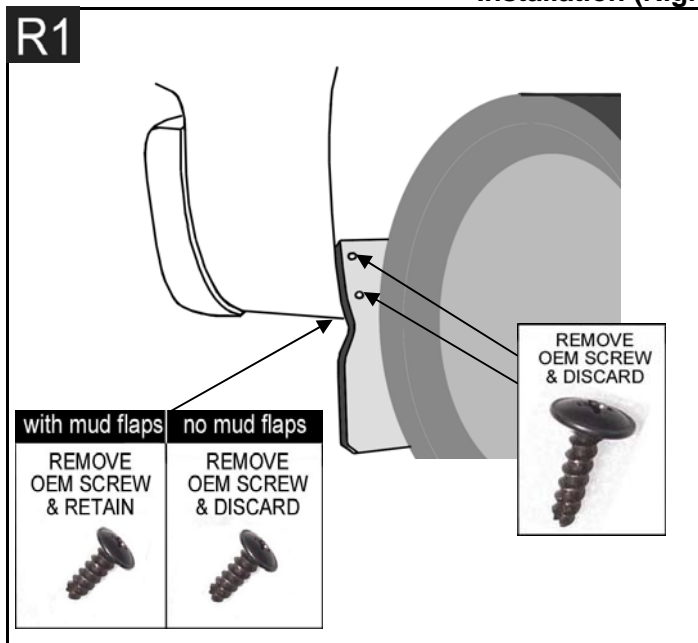


1. Re-Install the existing factory screws into the original location that were previously removed.

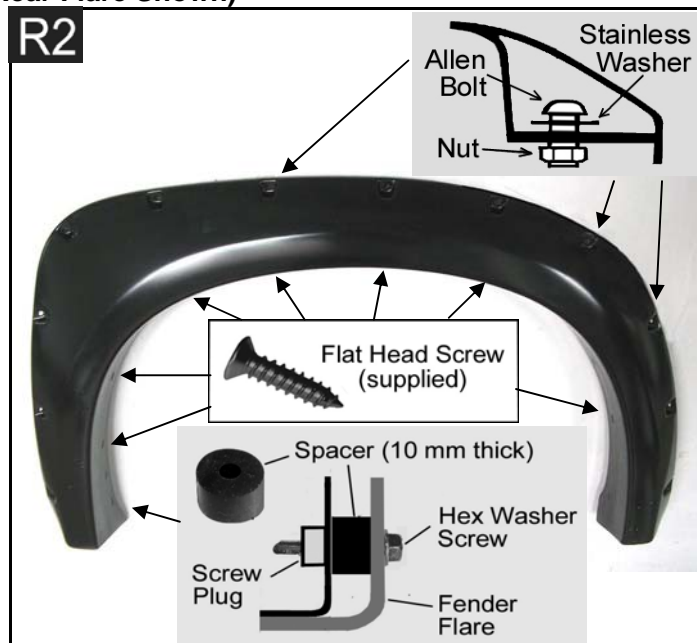


1. Insert the supplied spacer(5mm thick) in between vehicle body & flare, apply 2 flat head screws to secure the flare to the body,

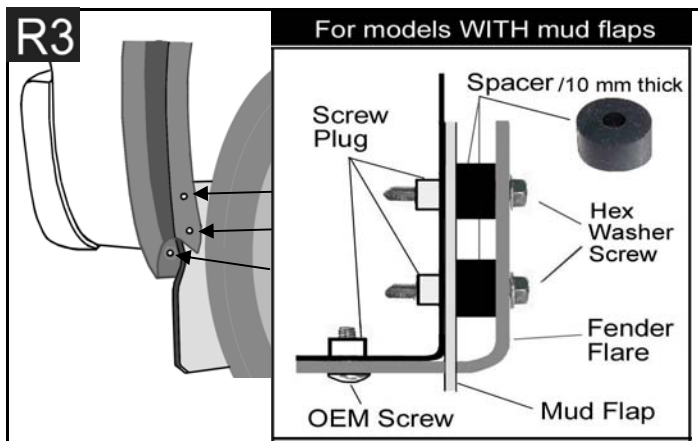
Installation (Right Rear Flare Shown)



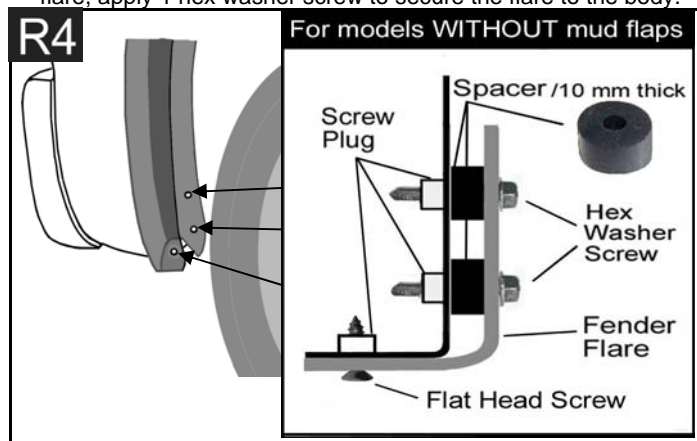
1. For the models with mud flaps, remove the 2 screws from the mud flap and discard, shown as right.
2. Also remove the screws from the under side of the body and retain, shown as left.



1. Use hex key to tight allen bolt & nut firmly on every pocket of the fender flare, shown as top.
2. Fasten 7 flat head screws into the location, shown as center.
3. Insert the supplied spacer(10mm) in between vehicle body & flare, apply 1 hex washer screw to secure the flare to the body.



1. Insert the supplied spacer(10mm) in between vehicle body & flare, apply 2 hex washer screws on top two holes and 1 OEM screw on bottom hole, and secure the flare to the body.



1. Insert the supplied spacer(10mm) in between vehicle body & flare, apply 2 hex washer screws on top two holes and 1 flat head screw on bottom hole, and secure the flare to the body.

Optional B : The included self tapping screw may be used for extra secure if needed.

All rights reserved by original. No part of this publication may be reproduced.